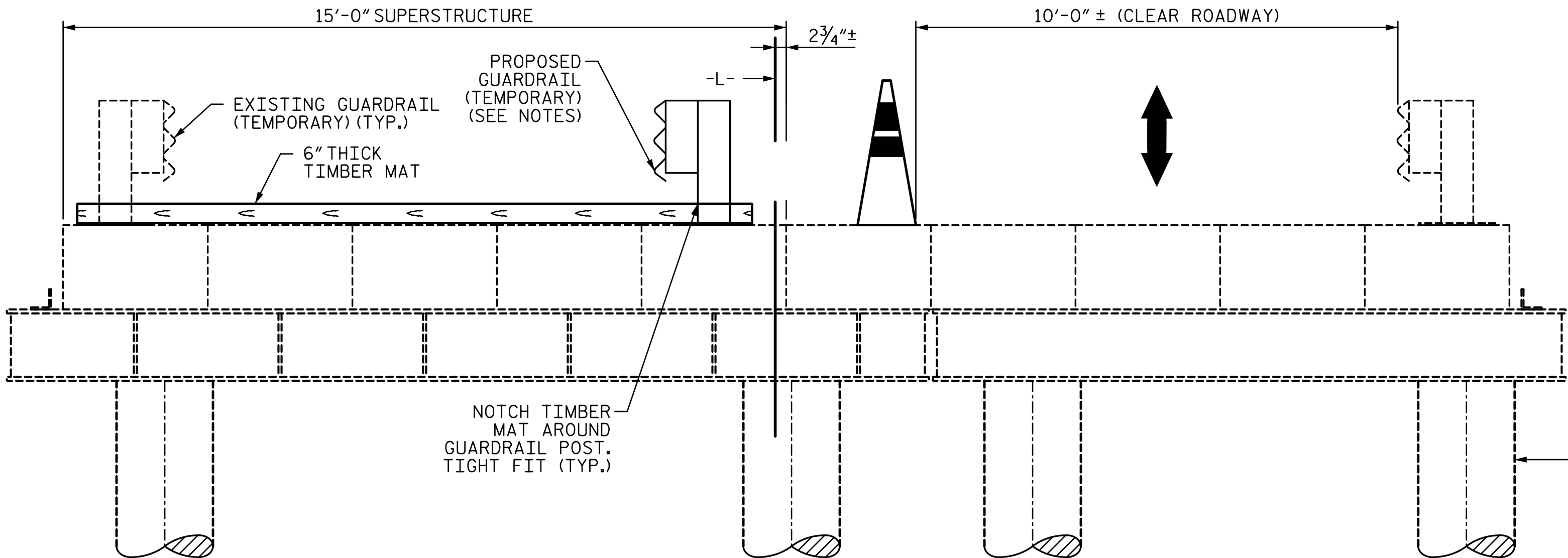
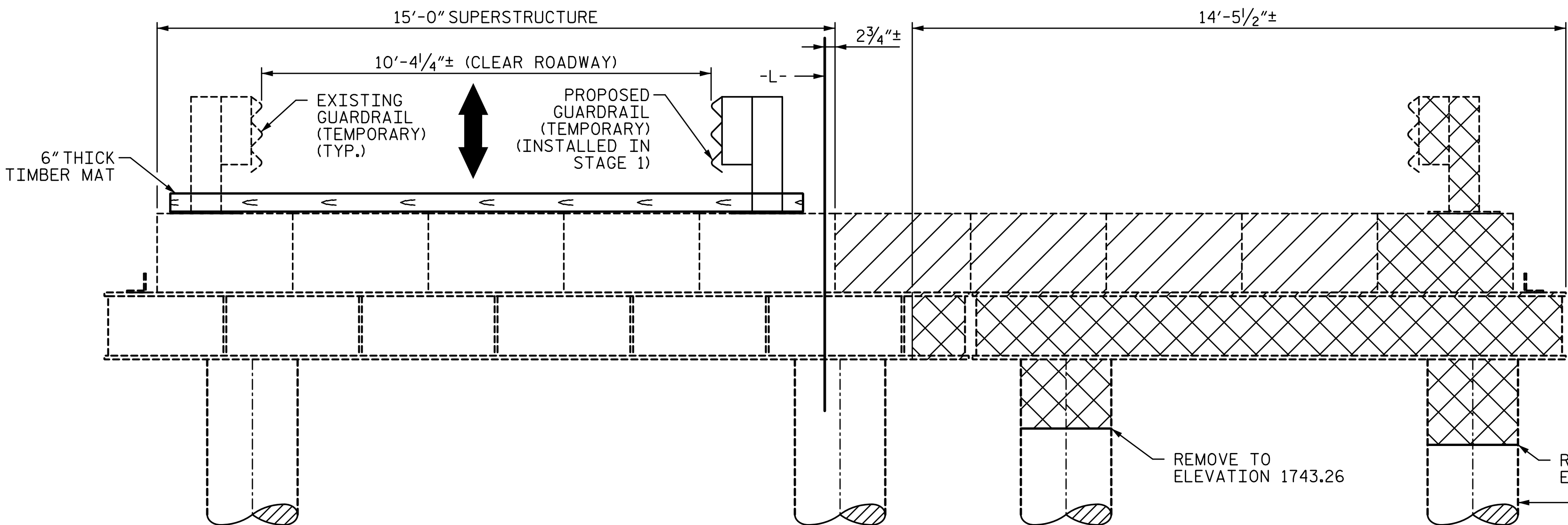


EXISTING STRUCTURE
(LOOKING UPSTATION @ INTERIOR BENT 2)



STAGE 1
(LOOKING UPSTATION @ INTERIOR BENT 2)



STAGE 2 (REMOVAL)
(LOOKING UPSTATION @ INTERIOR BENT 2)

NOTES:

TEMPORARY GUARDRAIL SHALL BE ANCHORED. CONTRACTOR SHALL SUBMIT METHOD OF ANCHORAGE TO THE ENGINEER FOR APPROVAL. PRIOR TO MAKING ANY MODIFICATIONS TO THE EXISTING CORED SLABS, THE CONTRACTOR SHALL LOCATE THE REINFORCING OR PRESTRESSING AND SHALL NOT DRILL OR INSTALL AT THESE LOCATIONS. CONTRACTOR SHALL NOTIFY THE ENGINEER IMMEDIATELY OF ANY DAMAGE TO REINFORCING OR PRESTRESSING IN THE EXISTING BEAMS.

TIMBER MATS (6" THICKNESS) SHALL BE PLACED AS SHOWN PRIOR TO DETENSIONING THE TRANSVERSE POST-TENSIONING RODS. TIMBER MATS SHALL REMAIN IN PLACE UNTIL CSU 6 (SEE SHEET 1 OF 8 FOR CSU 6 LOCATION) IS REMOVED AND TRANSVERSE POST-TENSIONING IS RE-INSTALLED. ONCE POST-TENSIONING IS REINSTALLED, TIMBER MATS MAY BE REMOVED, OR MAY REMAIN IN PLACE. TIMBER MATS SHALL BE MAINTAINED BY THE CONTRACTOR WHILE IN PLACE. NO MODIFICATIONS TO CSU ARE ALLOWED TO AFFIX TIMBER MATS TO THE BRIDGE.

FOR STAGE 2 (REMOVAL) DETENSIONING OF POST-TENSIONED STRANDS SHALL ONLY OCCUR FOR ONE SPAN PER EACH NIGHT OF WORK. FOR DURATIONS, SEE MAINTENANCE OF TRAFFIC PLANS.

FOR ADDITIONAL INFORMATION ON ATTACHING GUARDRAIL TO EXISTING CSU, SEE "ANCHORAGE DETAILS FOR TEMPORARY GUARDRAIL" SHEET.

STAGE 1 SEQUENCE:

1. SHIFT TRAFFIC TO RIGHT OF BRIDGE
2. INSTALL PROPOSED GUARDRAIL (TEMPORARY) AS SHOWN.
3. PLACE 6" TIMBER MAT. (SEE NOTES)

STAGE 2 SEQUENCE:

1. SHIFT TRAFFIC TO LEFT SIDE OF BRIDGE.
2. DETENSION AND REMOVE CORED SLAB UNITS AS SHOWN. SEE SHEET 1 OF 8 FOR EXISTING CORED SLAB UNITS TO BE RETAINED AND REUSED.
3. REMOVE EXISTING PILE CAP AS SHOWN.
4. REMOVE EXISTING 24" Ø PILES TO THE REQUIRED ELEVATION.

 REMOVE
(SEE NOTES ON SHEET 1 OF 8)

 REMOVE TO BE REUSED
(SEE NOTES ON SHEET 1 OF 8)

PROJECT NO. DF18314.2045332

HENDERSON COUNTY

STATION: 13+70.81 -L-

SHEET 6 OF 8



STATE OF NORTH CAROLINA
DEPARTMENT OF TRANSPORTATION
RALEIGH

CONSTRUCTION STAGING
(SPANS B & C AND
BENT 2)

REVISIONS						SHEET NO.
NO.	BY:	DATE:	NO.	BY:	DATE:	S-11
1			3			TOTAL SHEETS
2			4			32

DRAWN BY : M. KHIN DATE : 01/2025
CHECKED BY : M. ACOSTA DATE : 01/2025
DESIGN ENGINEER OF RECORD: M. ACOSTA DATE : 03/2026

DOCUMENT NOT CONSIDERED
FINAL UNLESS ALL
SIGNATURES COMPLETED